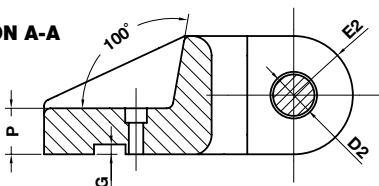


VDI 3366 LIFTING BRACKET WITH PIN TRAGWANGE MIT TRAGBOLZEN NACH VDI 3366 NORM STAFFA DI SOLLEVAMENTO TIPO VDI 3366 COMPLETA DI PERNO

SECTION A-A



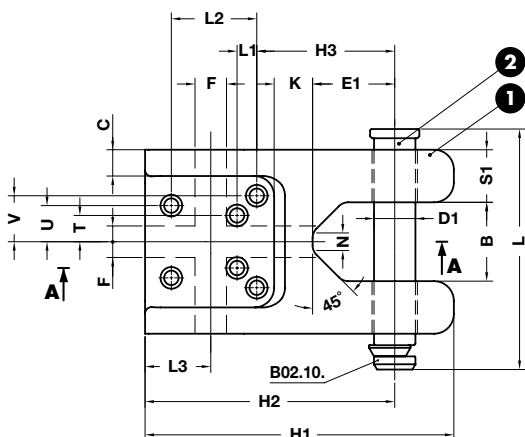
Respect the max load
Maximale Nutzlast beachten
Rispettare il carico Max

WARNING - ACHTUNG - ATTENZIONE:

For safety reason, please consider always that the weight of the die has to be supported by just 2 lifting brackets.

Aus Sicherheitsgründen stets berücksichtigen, dass zwei Tragwagen das gesamte Werkzeuggewicht tragen müssen.

Per ragioni di sicurezza, considerare sempre che il peso dello stampo deve essere sopportato da 2 sole staffe.



Notes

1 Material: St52

2 B02.10.

Screws not included

ORDER EXAMPLE	Art.	Max load
	B01.25.	31500

OMCR CODE	Max load (kg)	Max die weight (kg)	D1	D2	B	C	E1	E2	F	G	H1	H2	H3	N	K	L	L1	L2	L3	P	S1	T	U	V	Screws DIN 912 -8.8
B01.25.03200	3200	6400	32	34	60	20	63	40	25	7	260	220	125	28	37	175	30	85	45	40	40	25	30	30	M12x40
B01.25.05000	5000	10000	40	42	80	30	80	60	48	15	360	300	140	28	40	225	35	130	80	60	50	38	40	43	M16x75
B01.25.08000	8000	16000	50	52	100	30	100	60	48	15	380	320	160	28	40	273	35	130	85	70	60	40	55	55	M16x85
B01.25.12500	12500	25000	63	65	120	40	125	90	48	15	470	380	210	28	60	347	30	130	100	70	80	40	55	70	M20x90
B01.25.18000	18000	36000	76	78	140	40	160	90	64	20	510	420	250	45	60	422	20	135	100	90	100	50	75	100	M24x115
B01.25.25000	25000	50000	76	78	140	40	160	120	64	25	590	470	270	45	80	422	35	160	110	110	100	55	75	100	M30x140
B01.25.31500	31500	63000	76	78	140	40	160	130	64	25	600	470	270	45	80	422	35	160	110	120	100	55	75	100	M30x150