

LIFTING PIN FCA
TRAGBOLZEN MIT FALLRINGSICHERUNG UND FEDER NACH FCA NORM
PERNO DI SOLLEVAMENTO FCA



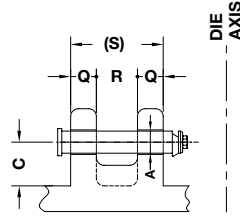
Respect the max load
 Maximale Nutzlast beachten
 Rispettare il carico Max

WARNING - ACHTUNG - ATTENZIONE:
 For safety reason, please consider always that the weight of the die has to be supported by just 2 lifting pins.

Aus Sicherheitsgründen stets berücksichtigen, dass zwei Tragbolzen das gesamte Werkzeuggewicht tragen müssen.

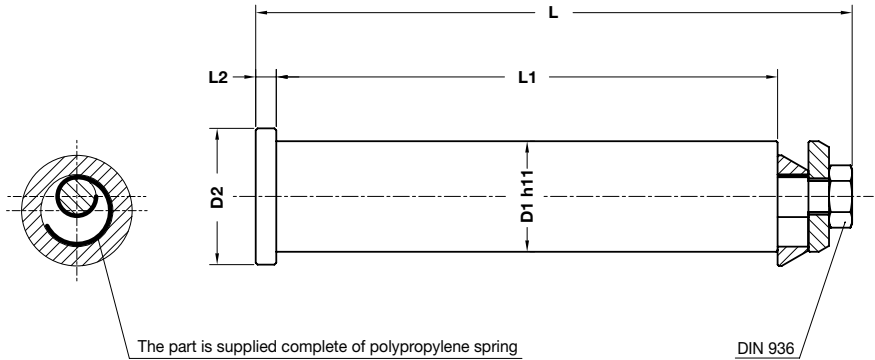
Per ragioni di sicurezza, considerare sempre che il peso dello stampo deve essere sopportato da 2 soli perni.

According - Nach - Secondo:
 STD 10060 ED.01/02/2012



Notes

Material: CK45



ORDER SAMPLE	Art.	D1=53	Type
	B02.15.	53	C

OMCR CODE	Max load (kg)	Max die weight (kg)	Type	A	C	D1	D2	L	L1	L2	Q	R	S
B02.15.29	2000	4000	-	30	60	29	38	178,5	150	6	40	60	140
B02.15.33	3200	6400	-	35	65	33	43	200,5	170	6	50	60	160
B02.15.43	5000	10000	-	45	85	43	53	233	195	8	50	80	180
B02.15.53	8000	16000	-	55	105	53	65	282	235	10	60	100	220
B02.15.53C	8000	16000	C	55	75	53	65	227	180	10	50	65	165
B02.15.63	12000	24000	-	65	130	63	78	352,5	295	12	80	120	280
B02.15.63C	13000	26000	C	65	100	63	78	272,5	215	12	60	80	200
B02.15.78	30000	60000	-	81	150	78	95	421,5	355	14	100	140	340